

MICHAEL SMITH & ASSOCIATES

LANDSCAPE ARCHITECTURE AND URBAN DESIGN

CURRENT PROJECTS

Kerang to Koondrook Rail Trail

Following a hiatus period due to the floods in October and November, we are in the process of the first stage of the engineering design and documentation by OPS Engineers and our office. Our office prepared the centreline on the base feature and levels survey layout prepared by Price Merrett surveyors. We are waiting on separate reports from the ecologist and cultural heritage consultant engaged by Gannawarra Shire Council to confirm particular site conditions, so we can continue our civil and structural engineering documentation.

Lake Colac Perimeter Path Feasibility Study

We completed the initial consultation process with landowners who front onto the lake. We recently undertook a second field inspection and on site meetings and inspection of properties with several farmers. We are now in the process of the preparation of the draft feasibility report, to include the realistic trail route and several sub section route options and the preparation of opinions of probable costs. ASR Research, OPS Engineers, Harlock Consulting, Practical Ecology and Andrew Long and Associates are the core subconsultants.

Mansfield Botanic Park Masterplan

We prepared the draft masterplan in December last year. There has been a change in project management at council, so the project has been on hold since December. We expect to finalise the masterplan report by the end of March.

Elwood Secondary College - Implementation

Programmed Contractors completed the construction, planting and laying of instant turf. The instant turf was not laid on really level ground and Programmed, at our and the colleges direction, have had to on several occasions fill uneven areas of ground. There have been problems with the water distribution pump in the water storage tanks, but these were overcome by Programmed Contractors in early January. Final completion is scheduled for late May.

Bridgewater Primary School Playing Field - Implementation

City Living Contractors are about to commence the on site works to construct a synthetic surfaced playing playfield and running track.

Princess Hill Secondary College - Site Works

Following the City of Yarra's requirements for road permits and despite our difficulties in obtaining precise costs of various permits and charges by council, the project is about to go to tender for the second time.

Newsletter

AUTUMN 2023



Koondrook is the important timber milling township on the Murray River. Gannawarra Shire Council has ensured that the timber theme is enhanced through streetscape detailing.



Elwood Secondary College's Arts Garden

MICHAEL SMITH & ASSOCIATES
LANDSCAPE ARCHITECTURE AND URBAN DESIGN



Postal: 5 Jervis Street, Camberwell Vic 3124
Office: 1st Floor, 407 Whitehorse Road, Balwyn Vic 3103
Telephone 03 9830 0414 Facsimile 03 9830 2555
Mobile 0418 172 863 Email mike@msalandurb.com.au

MICHAEL SMITH & ASSOCIATES

LANDSCAPE ARCHITECTURE AND URBAN DESIGN

NEW PROJECTS

Whitehorse City Council Landscape Details

Whitehorse City Council engaged our practice to prepare details for landscape construction of standard seats, picnic tables, bicycle hoops and post and rail fencing. Kiki Luo and Shravani Torvi shared the responsibility to prepare the AutoCAD construction details

Hanson Street and the Man From Snowy River Arcade - Streetscape Design and Documentation, Corryong

Our intense work with Council's Project Manager in August to October last year, saw our preparation of the landscape documentation combined with the civil works streetscape layout, prepared by Council's Project Manager. The civil works, planting and seating were tendered in January. The civil works are scheduled to start in April this year with planting in October 2023.

W.F. Vale Reserve Beaumaris, Revegetation and Habitat Enhancement

Bayside City Council made an executive decision during 2022, to increase the biodiversity and ecological values within some neighbourhood reserves in the Bayside municipality. We inspected W.F. Vale Reserve a 1.1 hectare area that has a significant coverage of native and indigenous canopy trees. Kiki Luo and Michael Smith prepared a plan that will see at least 70% of the park including nature strips, planted with indigenous coastal heathland ground covers and small shrubs. The plan is currently out for community review and comment.

Wattle Range Council South Australia Administration Centre

Wattle Range Council based at Millicent is 45 kilometres north of Mount Gambier. Council planned and has architectural designs for the new administration centre with carparking to the western end of a 400 metres corridor of civic space activities including the RSL clubrooms and Arts Centre, sports courts and a major playspace.

Hosken Reserve Coburg, Infrastructure Design and Documentation

Merri-bek City Council (formerly Moreland City Council) recently engaged our practice to head the design and documentation of mainly new paths, reassessment and alignment of new car parking areas, and the provision of a nature-based play space and an active play area. The park has two formal soccer fields, car parking and WSUD solutions are being documented by RMG Civil and Structural Engineers and Stantec Engineers are preparing the documentation for the electrical connection for barbecues. Paoli Smith Creative will be preparing signage design.

7 Wells Street Brighton. Neighbourhood Park.

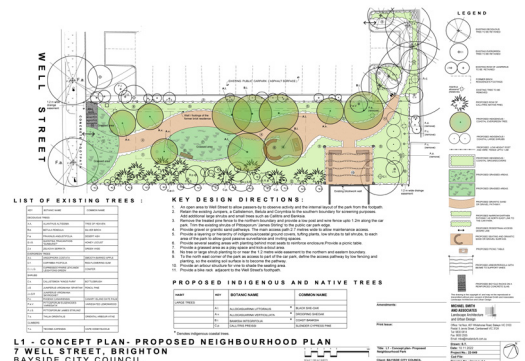
We completed the design and documentation of the new neighbourhood park adjacent to the Church Street shopping centre. The park, of approximately 800 square metres, replaces a former residential property and will provide a rest area for shoppers and the local community.

Newsletter

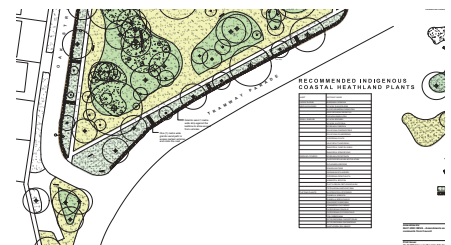
AUTUMN 2023



Hanson Street Corryong. Median strip and kerb outstands visualisation.



Concept plan for the neighbourhood park at Well Street, Brighton



Concept plan for the W.F. Vale Reserve Beaumaris

MICHAEL SMITH & ASSOCIATES
LANDSCAPE ARCHITECTURE AND URBAN DESIGN

Postal: 5 Jervis Street, Camberwell Vic 3124
Office: 1st Floor, 407 Whitehorse Road, Balwyn Vic 3103
Telephone 03 9830 0414 Facsimile 03 9830 2555
Mobile 0418 172 863 Email mike@msalandurb.com.au

MICHAEL SMITH & ASSOCIATES

LANDSCAPE ARCHITECTURE AND URBAN DESIGN

NEW PROJECTS

Northcote Golf Course - Trail Design and Documentation

Darebin City Council recently engaged our practice to lead the preparation of the concept design and documentation of the shared trail in the recreational zone at the eastern edge of the Northcote Golf Course. The trail will connect Mayer Park to the north and the residential area to the east, to the iconic pedestrian bridge across Merri Creek and to the Merri Creek Trail. This is strategically a very important project from Darebin City Council's perspective, to which Council have made this clear they are expecting us to deliver a highly refined concept for community consultation and in the final engineering design. Our thanks to subconsultants OPS Engineers, Ryder Consulting, AS James, Surfcoast Surveying and Practical Ecology, in assisting us with the scope and tender over two stages. In mid March, we attended the walk through of the intended route with the consultant team.

NEW ADMINISTRATIVE STAFF

We have two new staff members Sophie Wooller and Andrew Graham. Sophie is a final year Law/Global Studies student at Monash University. Andrew Graham is a second year Law/Arts student at Monash University. Both Sophie and Andrew provide office support in the preparation of major submissions, fee proposals and assistance in report writing.



Newsletter

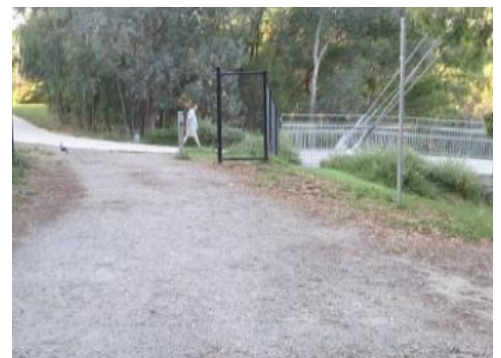
AUTUMN 2023



The proposed trail will start around the eastern boundary of the golf course



The proposed trail will be 750 metres in length and connect Mayer Park and the surrounding residential area to the Merri Creek Trail.



MICHAEL SMITH & ASSOCIATES
LANDSCAPE ARCHITECTURE AND URBAN DESIGN

Postal: 5 Jervis Street, Camberwell Vic 3124
Office: 1st Floor, 407 Whitehorse Road, Balwyn Vic 3103
Telephone 03 9830 0414 Facsimile 03 9830 2555
Mobile 0418 172 863 Email mike@msalandurb.com.au