

MICHAEL SMITH & ASSOCIATES

LANDSCAPE ARCHITECTURE AND URBAN DESIGN

CURRENT PROJECTS

Kerang to Koondrook Rail Trail

The Geotechnical Investigation and report was undertaken in April and May and OPS Engineers are under full stem, (no run intended) to prepare the contract documentation for the 22 kilometre journey linking Kerang to Koondrook, with approximately half the length of the trail on the former tramway's embankment formation. There is complex and detailed structural engineering design to be completed and Jeff Robinson at OPS Engineers is leading that side of the design. Wayne Galloway at Gannawarra Shire and Rural Roads Victoria are currently discussing the alignment of the trail at two pinch points where private property fence lines are close to the Kerang to Koondrook Road's shoulder and we are exploring options of extending the road seal to allow greater separation between vehicles and trail users.

Lake Colac Perimeter Path Feasibility Study

We have prepared the Draft Feasibility Study Report with assistance from Adrian Fernon and Lincoln Kern. Council's Project Manager is undertaking an internal review with senior staff of our draft findings for the trail. The prospects of a trail to the western side of the lake appear promising at this early stage, as most of this section would run along crown land for most of the foreshore to join Meredith Park, a popular free camping area which would extend the current trail to the edge of the City of Colac by approximately a further 20 kilometres.

Hosken Reserve, Coburg North

Merri-bek City Council advised the civil and landscape works needs to be de-scoped as tenders received by Council were over budget. We provided Council with a compilation of the lowest tenderer's sub tallies. Council's Project Manager with Council's Landscape Architect and a consultant Sports specialist provided MSA and RMG Engineers with the areas to reduce in scope. We are currently in the process of adjusting the engineering and landscape drawings.

Northcote Golf Course Trail Design and Documentation

With input from Council's Parks Team, OPS Enigneers and Ryder Consulting Arborists, we've completed the trail's concept layout. The trail of 800 linear metres to the eastern boundary of the golf course is where two golf holes and greens have recently been reconfigured cross section to allow safe passage of cyclists and walkers on the trail. Council will be presenting the trail concept together with other site and park improvements to the community in November this year.

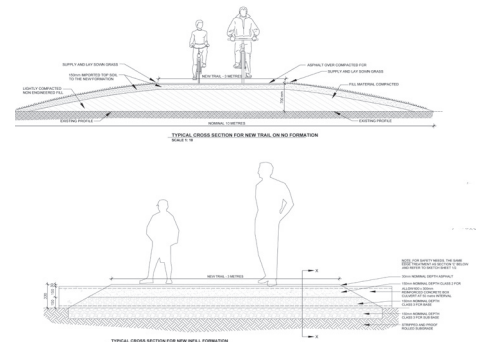
We recently prepared the concept for the nature-based playspace which is located in a pocket or corner of 2,000 square metres of the golf course adjacent to residential properties and a retirement village. The concept will form part of the plan presentation by Council to the community in November this year.

Newsletter

WINTER 2023



Visualisation by Paoli Smith
Featuring one of the Tramway Stations



Kerang to Koondrook Rail Trail
Preliminary cross sections



Northcote Golf Course Proposed Trail
Concept Layout Plan

MICHAEL SMITH & ASSOCIATES
LANDSCAPE ARCHITECTURE AND URBAN DESIGN

Postal: 5 Jervis Street, Camberwell Vic 3124
Office: 1st Floor, 407 Whitehorse Road, Balwyn Vic 3103
Telephone 03 9830 0414 Facsimile 03 9830 2555
Mobile 0418 172 863 Email mike@msalandurb.com.au

MICHAEL SMITH & ASSOCIATES

LANDSCAPE ARCHITECTURE AND URBAN DESIGN

NEW PROJECTS

Morington Special Development School - Playspace, sensory space and discovering circuit path

We are working closely with Katz Architecture on their major design for the replacement of over half of the school's learning and activity rooms as a VSBA funded building project.

We've inspected the school's current open space facilities, met with the Principal and Deputy Principal, the VSBA Representative and the Katz Architecture Team, to prepare concepts for a break-out playspace, another space for quiet reflective time and a coloured concrete circuit tricycle and scooter path of approximately 100 metres in length that will have several alcoves featuring log seating, Traditional Owners motifs within the discovery circuit path.

Cobblebank Business Park - Framework planting

Cobblebank is a new suburb, several kilometres south east of Melton. It is serviced by the Western Highway and the recently constructed Cobblebank Railway Station is on the Ballarat Rail line.

We are working with PGF Project's Paul Farrell, in the update of our previous street tree layout to the commercial subdivision and preparation of several detailed layouts for office and light industrial suites where planting of car parks and interface areas is important.

Ivanhoe Aquatic Centre

Haskell Architects engaged our practice to work with them on the external presentation and the provision of special spaces for small groups, as part of their delivery of the redevelopment of the Ivanhoe Pool and Recreation Centre, located on Waterdale Road.

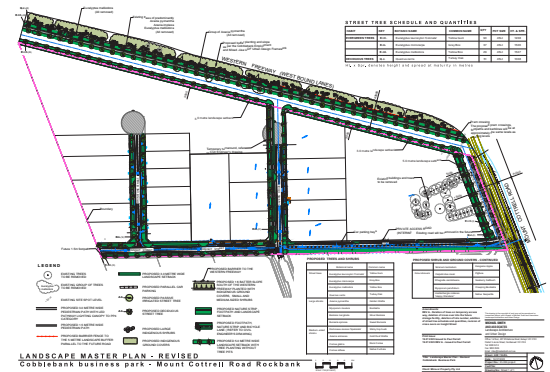
Wattle Range Shire Council Administration Centre - South Australia

We are in the process of completing the landscape layout and planting plan and the horticultural and landscape specification. We worked with the consultant team in providing a series of concepts designs for the social gathering space.

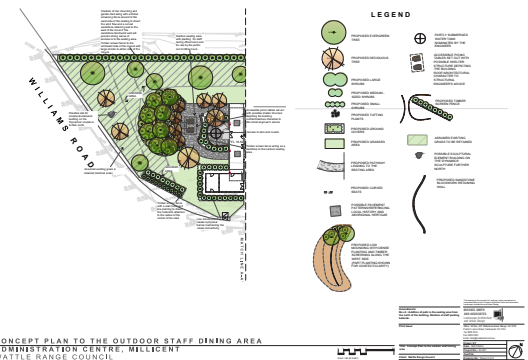
We've located several picnic tables to a small courtyard space, sheltered from cold westerly winds by a combination of mounding, timber batten fencing and tree planting to the mound. We are in the process of documenting some Traditional Owners inspired motifs within paved areas, such as Bunjil the Eagle.

Newsletter

WINTER 2023



*Cobblebank Business Park
- Landscape Layout Plan*



*Wattle Range Shire Council Administration
Centre
- Staff Outdoor Dining Concept Layout Plan*

MICHAEL SMITH & ASSOCIATES
LANDSCAPE ARCHITECTURE AND URBAN DESIGN



Postal: 5 Jervis Street, Camberwell Vic 3124
Office: 1st Floor, 407 Whitehorse Road, Balwyn Vic 3103
Telephone 03 9830 0414 Facsimile 03 9830 2555
Mobile 0418 172 863 Email mike@msalandurb.com.au